



# Climatic Bulletin

December 2018

 **Max  
temperature**

 **Min  
temperature**

 **Mean  
temperature**

 **Precipitation**

 **Sunshine  
duration**

December started with high temperatures but it had a cold end.  
From the middle of the period strong rainfalls recorded over eastern and southern parts.  
Also during last two days significant snowfalls covered mountainous mainland while gale force north winds prevailed over Aegean area.



ΕΘΝΙΚΗ  
**ΜΕΤΕΩΡΟΛΟΓΙΚΗ**  
ΥΠΗΡΕΣΙΑ

HELLENIC NATIONAL METEOROLOGICAL SERVICE



# Temperature

### First 10-day period

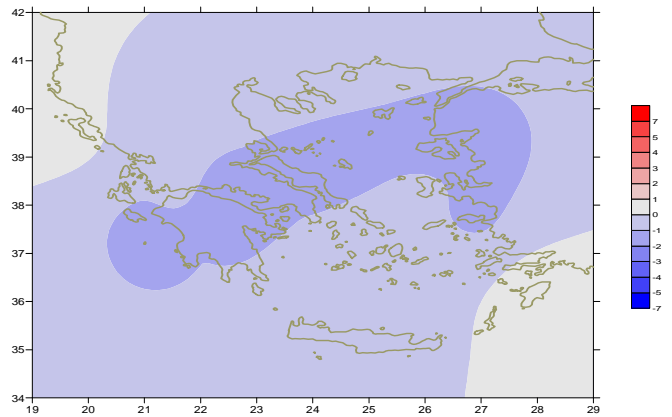
More specific (varied) :

**Minimum:**

from  $-9^{\circ}\text{C}$  to  $10^{\circ}\text{C}$  over north mainland,  
 from  $-4^{\circ}\text{C}$  to  $11^{\circ}\text{C}$  over central mainland,  
 from  $0^{\circ}\text{C}$  to  $15^{\circ}\text{C}$  over rest parts.

**Maximum:**

from  $6^{\circ}\text{C}$  to  $15^{\circ}\text{C}$  over north mainland,  
 from  $9^{\circ}\text{C}$  to  $18^{\circ}\text{C}$  over central mainland,  
 from  $11^{\circ}\text{C}$  to  $20^{\circ}\text{C}$  over rest parts.



*Deviation of mean temperature from normal values*

### Second 10-day period

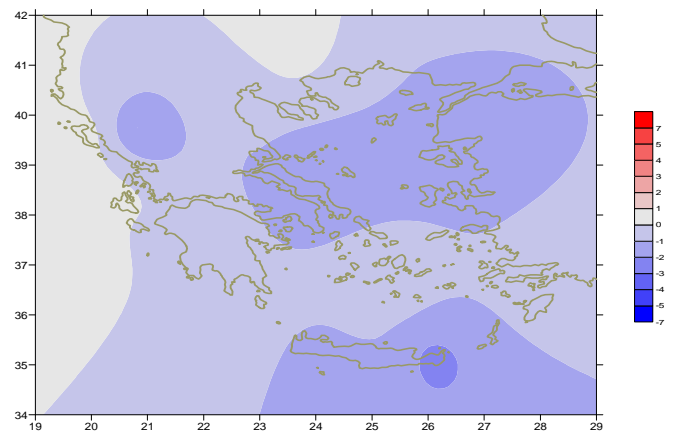
More specific (varied) :

**Minimum:**

from  $-10^{\circ}\text{C}$  to  $10^{\circ}\text{C}$  over north mainland,  
 from  $-3^{\circ}\text{C}$  to  $15^{\circ}\text{C}$  over central mainland,  
 from  $0^{\circ}\text{C}$  to  $17^{\circ}\text{C}$  over rest parts.

**Maximum:**

from  $0^{\circ}\text{C}$  to  $15^{\circ}\text{C}$  over north mainland,  
 from  $6^{\circ}\text{C}$  to  $17^{\circ}\text{C}$  over central mainland,  
 from  $8^{\circ}\text{C}$  to  $21^{\circ}\text{C}$  over rest parts.



*Deviation of maximum temperature from normal values*

### Third 10-day period

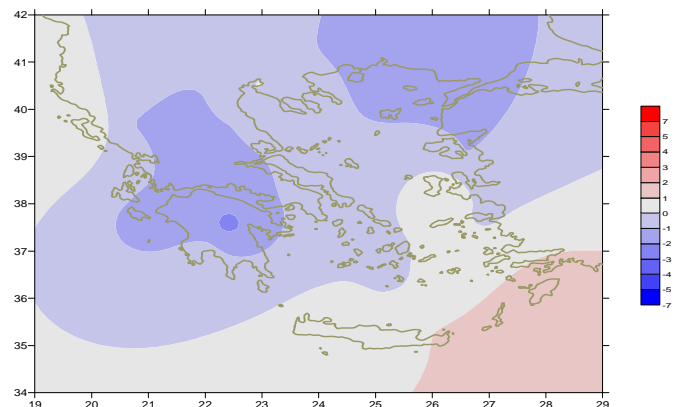
More specific (varied) :

**Minimum:**

from  $-8^{\circ}\text{C}$  to  $7^{\circ}\text{C}$  over north mainland,  
 from  $-6^{\circ}\text{C}$  to  $12^{\circ}\text{C}$  over central mainland,  
 from  $0^{\circ}\text{C}$  to  $15^{\circ}\text{C}$  over rest parts.

**Maximum:**

from  $3^{\circ}\text{C}$  to  $15^{\circ}\text{C}$  over north mainland,  
 from  $6^{\circ}\text{C}$  to  $18^{\circ}\text{C}$  over central mainland,  
 from  $8^{\circ}\text{C}$  to  $21^{\circ}\text{C}$  over rest parts.



*Deviation of minimum temperature from normal values*



## Precipitation

### First 10-day period

Locally remarkable precipitation.

More specific:

11mm in Kasteli, 13mm in Gavdos (3/12),  
13mm in Rodos (4/12), 14mm in Karpathos (4/12), 55mm in Sofades (7/12),  
15mm in Alexandroupoli, 34mm in Samos, 16mm in Tinos (9/12),  
24mm in Kerkyra, 19mm in Ioannina, 31mm in Preveza, 21mm in Limnos,  
18mm in Mitilini, 11mm in Kos, 18mm in Rodos, 14mm in Tithorea (10/12).

### Second 10-day period

Locally large amounts of precipitation.

More specific:

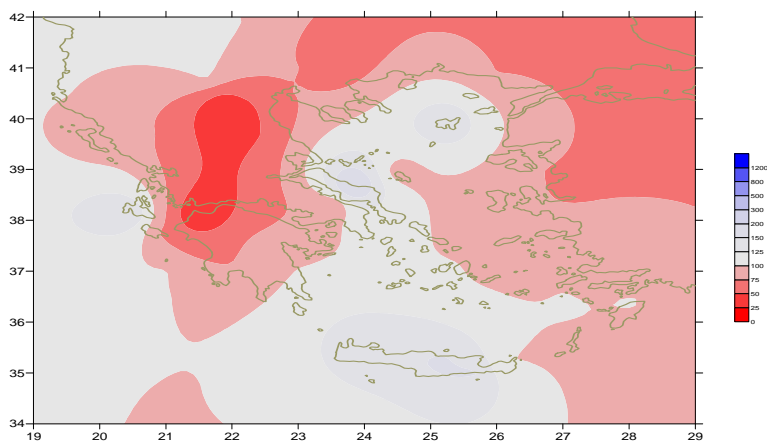
32mm in Argostoli, 18mm in Souda (11/12), 27mm in Limnos (12/12),  
15mm in Tanagra, 55mm in Zakynthos, 27mm in Kerkyra, 18mm in Methoni,  
17mm in Antikithira (13/12), 52mm in Kerkyra, 27mm in Ioannina,  
32mm in Preveza, 24mm in Fourni (15/12),  
25mm in Chrissoupoli, 30mm in Chios, 36mm in Samos, 31mm in Astipalea,  
21mm in Heraklion (16/2),  
17mm in Thessaloniki, 46mm in Argostoli, 26mm in Hellinikon, 18mm in Elefsina,  
36mm in Rodos, 26mm in Mikonos, 23mm in Leros, 31mm in Syros, 31mm in Tinos,  
33mm in Oreoi, 18mm in Soufli (18/12),  
25mm in Souda (19/12).

### Third 10-day period

Very high amounts of precipitation mainly at the end.

More specific:

20mm in Mitilini, 20mm in Oreoi, 20mm in Kimi (25/12),  
11mm in Karistos (26/12),  
25mm in Astros, 18mm in Argostoli, 39mm in Zakynthos, 21mm in Argos,  
39mm in Syros, 21mm in Mikonos, 22mm in Heraklion, 16mm in Tinos,  
68mm in Leonidio, 27mm in Milos, 22mm in Methoni (31/12).



*Deviation of monthly precipitation height  
from normal values (%)*

TABLE OF MEAN VALUES

STATION	Longitude	Latitude	Tmean	TX	TN	RR	INST
SERRES	23,53	41,07	4,7	9,6	0	14	122
FLORINA	21,40	40,78					
KASTORIA	21,27	40,45	3	8,3	-1,8	20	125
TRIKALA_IMATHIAS	22,55	40,60					
THESSALONIKI	22,97	40,52	6,5	10,3	2,8	35	134
CHRYSOUPOLI	24,62	40,92	6,2	10,4	2,1	66	119
ALEXANDROUPOLI	25,95	40,85	6,2	9,6	2	61	87
KOZANI	21,83	40,28	2,9	7,2	-0,9	4	
KERKYRA	19,92	39,62	11,6	15,9	7,5	145	120
IOANNINA	20,82	39,70	5,2	9,4	0,5	100	93
PREVEZA	20,76	38,91	10,8	14,6	7,9	146	
TRIKALA_THESSALIAS	21,77	39,52					
LARISA	22,45	39,65	5,5	10,5	0,8	22	118
LIMNOS	25,23	39,92	8,1	11,3	5	110	87
ARTA	21,00	39,17					
AGHIALOS	22,78	39,21	7	11,4	3,4	40	138
MYTILINI	26,60	39,05	9,8	12,2	7,7	81	107
VELO	22,77	37,97					
AGRINIO	21,35	38,60					
LAMIA	22,43	38,87					
ANDRAVIDA	21,28	37,92	10,1	15,4	5,8	91	127
SKYROS	24,48	38,96	10,3	12,3	8,3	66	74
ARGOSTOLI	20,50	38,12	12,3	16,3	9,3	153	153
ARAXOS	21,42	38,15	10,7	14,9	6,5	38	152
TANAGRA	23,57	38,33	7,7	11,9	4,2	54	108
HIOS	26,13	38,35	10,3	13	8	92	87
PYRGOS	21,42	37,67					
TRIPOLI	22,40	37,52	5,4	10,9	0,5	126	146
TATOI	23,78	38,10	8	11,9	4,6	56	
HELLINIKO	23,73	37,90	10,9	13,6	8,2	69	145
ELEYSINA	23,55	38,07	9,8	13,6	6,5	46	
ZAKYNTHOS	20,88	37,75	11,3	15,5	7,9	126	156
SAMOS	26,92	37,68	10,8	14	8,4	129	
ARGOS	22,75	37,63					
KALAMATA	22,02	37,07	10,6	16,5	6,5	103	167
NAXOS	25,37	37,10					
METHONI	21,70	36,82					
MHLOS	24,43	36,73					
SPATA	23,95	37,95					
KOS	27,08	36,80	12	14,2	10,2	78	
KYTHIRA	22,98	36,15					
SANTORINI	25,41	36,41	12,4	14,6	10	64	117
SOUDA	24,12	35,55	11,9	15	9,8	125	110
RODOS	28,08	36,40	14,1	16,3	11,9	113	146
MYKONOS	25,35	37,43	11,1	13,7	9,5	65	
HRAKLEIO	25,18	35,33	13,4	15,9	11	86	110
IERAPETRA	25,73	35,02					
SITEIA	26,10	35,21	13,7	15	12,2	59	81
RETHYMNO	24,50	35,36					
TYMPAKI	24,76	35,06					
KASTELI	25,33	35,18	10,4	13,3	7,5	110	102
KARPATHOS	27,15	35,42	14,5	16,5	12,6	75	
PAROS	25,13	37,02	12	14,2	10,3	79	108
SYROS	24,95	37,42	11,9	14,2	10	59	120
IKARIA	26,35	37,68					

11,314,58,13617810,214,16,45611,314,57,89612510,713,7820210,5165,88616112,715,410,232137

**TABLE OF DEVIATIONS  
FROM NORMAL VALUES**

STATION	TMEAN ( deviation ) (I)	PRECI (deviation % ) (II)
SERRES	-0.2	32
FLORINA		
THESSALONIKI	-0.2	66
ALEXANDROUPOLI	-0.8	70
KOZANI	-0.7	8
KERKYRA	0.5	81
IOANNINA	-0.6	58
LARISA	-0.8	42
LIMNOS	-1.2	137
AGHIALOS	-1	63
MYTILINI	-1.5	56
AGRINIO		
SKYROS	-1.4	85
ARGOSTOLI	-0.6	122
ARAXOS	-0.8	29
HIOS	-0.8	80
HELLINIKO	-1.1	104
ZAKYNTHOS	-1.5	74
SAMOS	-1.3	79
KALAMATA	-1	67
NAXOS		
METHONI		
SANTORINI	-0.4	105
SOUDA	-0.7	133
RODOS	0.7	78
HERAKLIO	-0.4	112
SITIA	-0.3	67

(I) deviation of mean temperature from normal values  
 (II) deviation of monthly precipitation height from normal values %.

# Climatic Bulletin

## General Description

Precipitation amounts were very higher than normal values over Aegean area (mainly over mountains of Evia and Creta) while they were lower enough over Macedonia and Thessaly. The mean temperature varied lightly lower than normals almost everywhere.

### Climatic Parameters :

- ❖ **Normal Values** : normal values for various parameters (temperature, precipitation, etc) are defined as mean values calculated for 30 years. These normal values are used as basis and represent the mean situation. They can be specified in 10 daily, monthly, seasonally and yearly level and are used for the trend comparison of 10 days, month, season or year as: rainy decameron, mild winter, cool August etc.

### Measurement :

- ❖ **Precipitation**  
1 mm = 1 litre/m<sup>2</sup>

### Table Legend :

Tmean : Mean Temperature  
 TN : Minimum Temperature  
 TX : Maximum Temperature  
 RR : Precipitation height(mm)  
 INST : Sun Duration (hours)

### UTC hours (Universal Time Coordinates) in Greece :

- ❖ Winter : UTC hour = local hour - 2
- ❖ Summer : UTC hour = local hour - 3

© Hellenic National Meteorological Service  
 Reproduction is prohibited without written authorization  
 14 El.Venizelou 16777  
 Helliniko, Athens  
 Greece