




Climatic Bulletin

April 2018

 **Max
temperature**

 **Min
temperature**

 **Mean
temperature**

 **Precipitation**

 **Sunshine
duration**

April was a hot and dry month. Specifically the mean temperature values exceeded the normal ones everywhere, while the precipitation mean values were lower enough. It is remarkable that there was lack of precipitation in Ionian and south Aegean area. Also significant dust episodes took place between 11-18/4. Namely large amounts of dust from northern Africa transferred to Greek area affecting the whole country.



ΕΘΝΙΚΗ
ΜΕΤΕΩΡΟΛΟΓΙΚΗ
ΥΠΗΡΕΣΙΑ

HELLENIC NATIONAL METEOROLOGICAL SERVICE



Temperature

First 10-day period

More specific (varied) :

Minimum:

from -0.7°C to 14°C over north mainland,
 from 3°C to 15°C over central mainland,
 from 4°C to 15°C over rest parts.

Maximum:

from 14°C to 28.5°C over north mainland,
 from 17°C to 25°C over central mainland,
 from 17°C to 26°C over rest parts.

Second 10-day period

More specific (varied) :

Minimum:

from 3°C to 13°C over north mainland,
 from 4°C to 17°C over central mainland,
 from 6°C to 18°C over rest parts.

Maximum:

from 17°C to 30°C over north mainland,
 from 20°C to 29.5°C over central mainland,
 from 17°C to 32°C over rest parts.

Third 10-day period

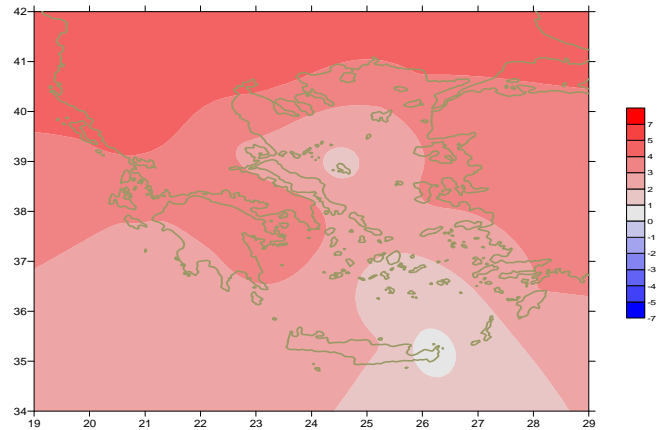
More specific (varied) :

Minimum:

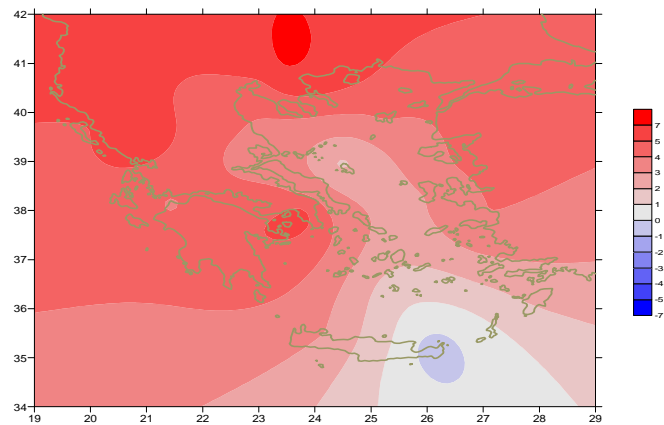
from 3°C to 15.5°C over north mainland,
 From 5°C to 21°C over central mainland,
 from 3°C to 21°C over rest parts.

Maximum:

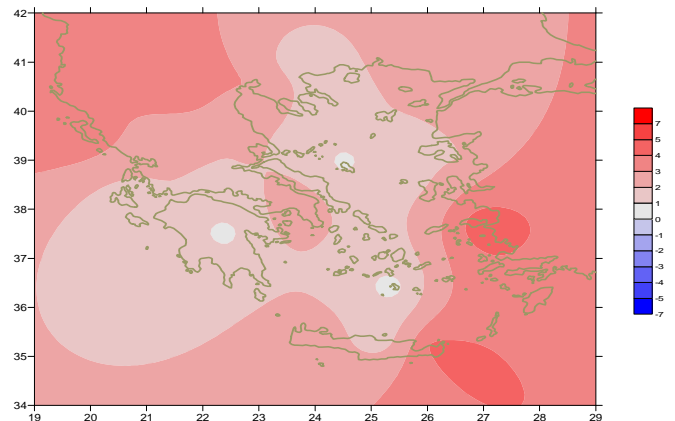
from 19°C to 29°C over north mainland,
 from 10°C to 31°C over central mainland,
 From 17°C to 32°C over rest parts.



Deviation of mean temperature from normal values



Deviation of maximum temperature from normal values



Deviation of minimum temperature from normal values



Precipitation

First 10-day period

Locally remarkable precipitation.

More specific:

*10mm in Ioannina (1/4),
3mm in Mitilini, 2mm in Preveza (2/4),
4mm in Florina, 13mm in Tripoli, 8mm in Lamia, 6mm in Argos (6/4),
4mm in Serres, 4mm in Florina, 5mm in Edessa,
4mm in Skiathos, 5mm in Hellinikon, 4mm in Kalamata (7/4),
28mm in Karpathos, 3mm in Leros (8/4).*

Second 10-day period

Significant precipitation locally over northwest mainland.

More specific:

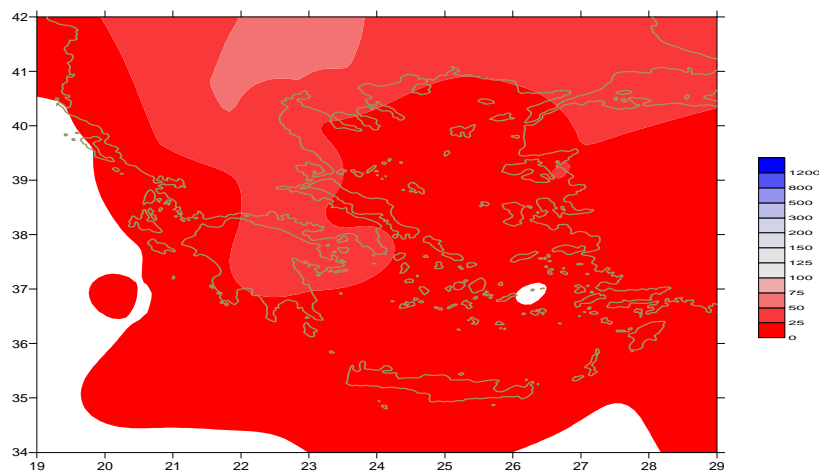
*17mm in Konitsa, 1mm in Edessa (16/4),
4mm in Florina, 14mm in Konitsa (18/4),
2mm in Kozani (19/4).*

Third 10-day period

Few precipitation mainly during last day.

More specific:

*2mm in Thessaloniki, 6mm in Argos (21/4),
3mm in Kozani, 3mm in Lamia, 1mm in Larisa,
2mm in Oreoi, 1mm in Messologi, 1mm in Tripoli,
1mm in Tanagra, 1mm in Adravidia, 1mm in Araxos(30/4).*



*Deviation of monthly precipitation
height from normal values (%)*

TABLE OF MEAN VALUES

STATION	Longitude	Latitude	Tmean	TX	TN	RR	INST
SERRES	23,53	41,07	18,9	27,3	9,4	7	113
FLORINA	21,40	40,78					
KASTORIA	21,27	40,45	16,3	22,9	7,1	4	224
TRIKALA_IMATHIAS	22,55	40,60					
THESSALONIKI	22,97	40,52	18,4	23,7	10,3	5	263
CHRYSOUPOLI	24,62	40,92	17,1	21,6	10,6	1	264
ALEXANDROUPOLI	25,95	40,85	17,3	21,5	9,6	2	276
KOZANI	21,83	40,28	16,8	21,1	8,8	17	
KERKYRA	19,92	39,62	19,2	24,1	13,3	0	286
IOANNINA	20,82	39,70	17,3	24,4	8,8	12	222
PREVEZA	20,76	38,91	18,1	22,5	13	2	
TRIKALA_THESSALIAS	21,77	39,52					
LARISA	22,45	39,65	17,3	24,3	8,3	3	250
LIMNOS	25,23	39,92	16,6	21,4	10,7	1	279
ARTA	21,00	39,17					
AGHIALOS	22,78	39,21	17,1	22,5	9,8	3	260
MYTILINI	26,60	39,05	19	23,5	13,4	4	296
VELO	22,77	37,97					
AGRINIO	21,35	38,60					
LAMIA	22,43	38,87					
ANDRAVIDA	21,28	37,92	18,1	23,6	11,2	1	265
SKYROS	24,48	38,96	16,8	19,7	12,4	0	246
ARGOSTOLI	20,50	38,12	18,5	22,9	13	0	290
ARAXOS	21,42	38,15	18,5	23,2	11,6	1	251
TANAGRA	23,57	38,33	17,7	23,7	9,5	1	270
HIOS	26,13	38,35	18,5	21,8	12,2	2	277
PYRGOS	21,42	37,67					
TRIPOLI	22,40	37,52	15,4	22,2	5,8	17	254
TATOI	23,78	38,10	18,4	23,8	10,7	1	
HELLINIKO	23,73	37,90	19,8	24,9	14,4	5	273
ELEYSINA	23,55	38,07	19,9	24,9	12,2	0	
ZAKYNTHOS	20,88	37,75	18,5	23,2	12,1	0	294
SAMOS	26,92	37,68	20,3	23,8	15,3	0	
ARGOS	22,75	37,63					
KALAMATA	22,02	37,07	18,1	24,5	10,4	5	284
NAXOS	25,37	37,10					
METHONI	21,70	36,82					
MHLOS	24,43	36,73					
SPATA	23,95	37,95	18,4	22,7	9,7	2	
KOS	27,08	36,80	18,6	22,1	15,1	0	
KYTHIRA	22,98	36,15					
SANTORINI	25,41	36,41	16,8	19,6	13,2	0	276
SOUDA	24,12	35,55	18,4	23,1	13,7	2	279
RODOS	28,08	36,40	19,7	22,7	16	0	299
MYKONOS	25,35	37,43	17,5	20,4	14,4	0	
HRAKLEIO	25,18	35,33	18,7	21,6	13,5	0	272
IERAPETRA	25,73	35,02					
SITEIA	26,10	35,21	17,4	19,8	14,5	0	165
RETHYMNO	24,50	35,36					
TYMPAKI	24,76	35,06					
KASTELI	25,33	35,18	17,6	23,2	10,4	0	271
KARPATOS	27,15	35,42	18,9	21,8	16	28	
PAROS	25,13	37,02	18,4	22,4	15,4	0	270
SYROS	24,95	37,42					
IKARIA	26,35	37,68					

11,314,58,13617810,214,16,45611,314,57,89612510,713,7820210,5165,88616112,715,410,232137

**TABLE OF DEVIATIONS
FROM NORMAL VALUES**

STATION	TMEAN (deviation) (I)	PRECI (deviation %) (II)
SERRES	4.6	20
FLORINA		
THESSALONIKI	4.5	14
ALEXANDROUPOLI	4.2	5
KOZANI	4.4	42
KERKYRA	4.9	-
IOANNINA	4.7	16
LARISA	3.3	10
LIMNOS	2.8	3
AGHIALOS	2.9	9
MYTILINI	3.2	9
AGRINIO		
SKYROS	1.6	-
ARGOSTOLI	3.1	-
ARAXOS	3.1	2
HIOS	3	5
HELLINIKO	3.8	20
ZAKYNTHOS	3	-
SAMOS	4.2	-
KALAMATA	2.7	11
NAXOS		
METHONI		
SANTORINI	1.2	-
SOUDA	2.6	6
RODOS	3	-
HERAKLIO	2.1	-
SITIA	0.6	-

(I) deviation of mean temperature from normal values
 (II) deviation of monthly precipitation height from normal values %.

Climatic Bulletin

General Description

Precipitation amounts were lower enough than normals everywhere. The mean temperature varied very higher than normal values in the whole country.

Climatic Parameters :

- ❖ **Normal Values** : normal values for various parameters (temperature, precipitation, etc) are defined as mean values calculated for 30 years. These normal values are used as basis and represent the mean situation. They can be specified in 10 daily, monthly, seasonally and yearly level and are used for the trend comparison of 10 days, month, season or year as: rainy decameron, mild winter, cool August etc.

Measurement :

- ❖ **Precipitation**
1 mm = 1 litre/m²

Table Legend :

Tmean : Mean Temperature
 TN : Minimum Temperature
 TX : Maximum Temperature
 RR : Precipitation height(mm)
 INST : Sun Duration (hours)

UTC hours (Universal Time Coordinates) in Greece :

- ❖ Winter : UTC hour = local hour - 2
- ❖ Summer : UTC hour = local hour - 3

© Hellenic National Meteorological Service
 Reproduction is prohibited without written authorization
 14 El.Venizelou 16777
 Helliniko, Athens
 Greece