




Climatic Bulletin

June 2017

 **Max
temperature**

 **Min
temperature**

 **Mean
temperature**

 **Precipitation**

 **Sunshine
duration**

June started with cool weather but significant rainfalls and thunderstorms recorded in the middle of the month. The third 10-days period characterized by lack of precipitation and rise of temperature. It is remarkable that extremely high values recorded during last day when the thermometer marked 44.8 degrees (Celsius) in Elefsina met. station.



Temperature

First 10-day period

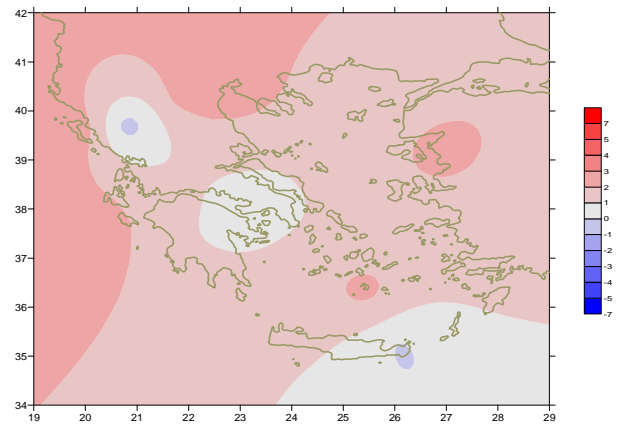
More specific (varied) :

Minimum:

from 9°C to 21°C over north mainland,
 from 13°C to 21°C over central mainland,
 from 17°C to 23°C over rest parts.

Maximum:

from 23°C to 30°C over north mainland,
 from 27°C to 31°C over central mainland,
 from 26°C to 30°C over rest parts.



Deviation of mean temperature from normal values

Second 10-day period

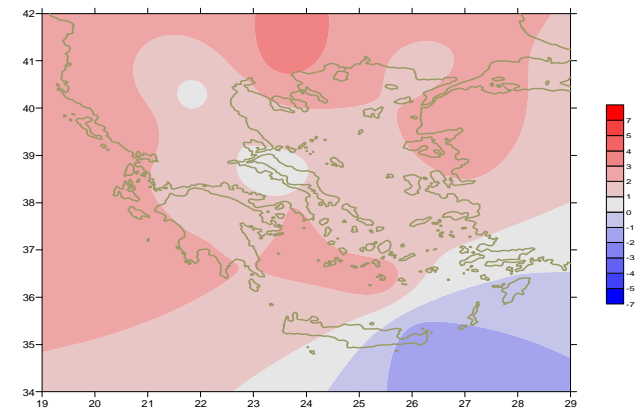
More specific (varied) :

Minimum:

from 10°C to 21°C over north mainland,
 from 13°C to 21°C over central mainland,
 from 10°C to 24°C over rest parts.

Maximum:

from 18°C to 35°C over north mainland,
 from 22°C to 34°C over central mainland,
 from 22°C to 30°C over rest parts.



Deviation of maximum temperature from normal values

Third 10-day period

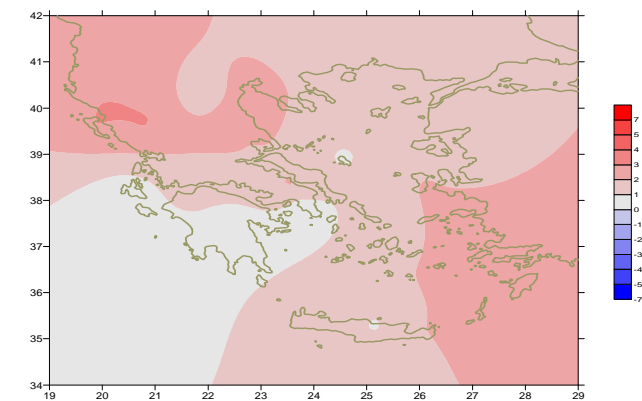
More specific (varied) :

Minimum:

from 10°C to 23°C over north mainland,
 From 14°C to 26°C over central mainland,
 from 18°C to 28°C over rest parts.

Maximum:

from 29°C to 41°C over north mainland,
 from 29°C to 45°C over central mainland,
 From 28°C to 41°C over rest parts.



Deviation of minimum temperature from normal values



P r e c i p i t a t i o n

First 10-day period

Local precipitation mainly over mainland.

More specific:

*24mm in Larisa (3/6),
29mm in Alexandroupoli, 7mm in Tripoli,
13mm in Helliniko, 6mm in Tatoi (4/6),
5mm in Konitsa (6/6),
7mm in Kasteli, 6mm in Tripoli, 4mm in Kalamata,
4mm in Mikonos (8/6), 4mm in Alexandroupoli (9/6).*

Second 10-day period

Significant precipitation.

More specific:

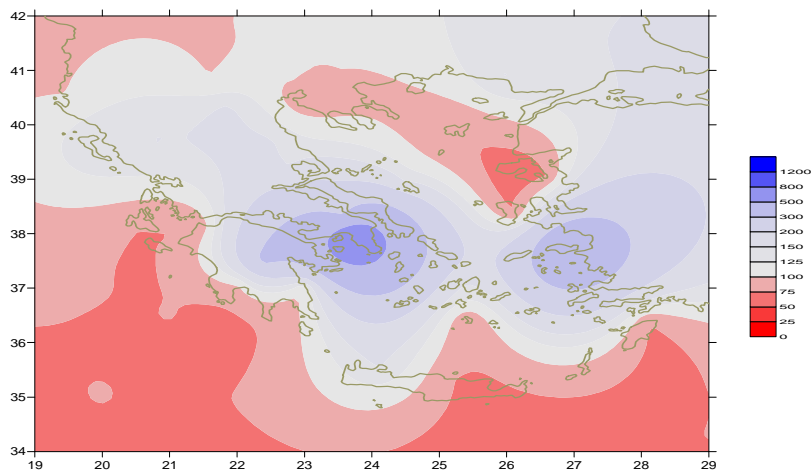
*11mm in Thessaloniki, 19mm in Chrisoupoli, 36mm in Kozani,
16mm in Kerkira, 21mm in Desfina, 21mm in Tanagra,
52mm in Tripoli (11/6),
13mm in Chrisoupoli, 10mm in Kozani (15/6),
26mm in Ioannina (16/6),
26mm in Desfina, 15mm in Tatoi, 13mm in Spata,
20mm in Elefsina, 42mm in Helliniko (18/6).*

Third 10-day period

Lack of precipitation in general.

More specific:

*22mm in Ioannina (25/6),
6mm in Serres (26/6).*



*Deviation of monthly precipitation
height from normal values (%)*

TABLE OF MEAN VALUES

| STATION | Longitude | Latitude | Tmean | TX | TN | RR | INST |
|--------------------|-----------|----------|-------|------|------|------|------|
| SERRES | 23,53 | 41,07 | 26,1 | 33,2 | 17,8 | 39 | 300 |
| FLORINA | 21,40 | 40,78 | | | | | |
| KASTORIA | 21,27 | 40,45 | 23,1 | 29,1 | 14,1 | 25 | 289 |
| TRIKALA_IMATHIAS | 22,55 | 40,60 | | | | | |
| THESSALONIKI | 22,97 | 40,52 | 26,9 | 31,1 | 18,5 | 14 | 316 |
| CHRYSOUPOLI | 24,62 | 40,92 | 24,7 | 28,2 | 18,3 | 34 | 297 |
| ALEXANDROUPOLI | 25,95 | 40,85 | 24,6 | 28,8 | 16,5 | 40 | 316 |
| KOZANI | 21,83 | 40,28 | 23,7 | 26,7 | 14,3 | 61 | |
| KERKYRA | 19,92 | 39,62 | 26,4 | 30,4 | 19,4 | 16 | 351 |
| IOANNINA | 20,82 | 39,70 | 24 | 30,2 | 15,8 | 60 | 307 |
| PREVEZA | 20,76 | 38,91 | 25 | 28,9 | 18,5 | 9999 | |
| TRIKALA_THESSALIAS | 21,77 | 39,52 | | | | | |
| LARISA | 22,45 | 39,65 | 26,7 | 32,7 | 17,5 | 37 | 289 |
| LIMNOS | 25,23 | 39,92 | 24,7 | 28,7 | 18,1 | 7 | 322 |
| ARTA | 21,00 | 39,17 | | | | | |
| AGHIALOS | 22,78 | 39,21 | 25,7 | 29,9 | 18,1 | 22 | 312 |
| MYTILINI | 26,60 | 39,05 | 26,8 | 31,2 | 20,4 | 9999 | 365 |
| VELO | 22,77 | 37,97 | | | | | |
| AGRINIO | 21,35 | 38,60 | | | | | |
| LAMIA | 22,43 | 38,87 | | | | | |
| ANDRAVIDA | 21,28 | 37,92 | 25,4 | 29,8 | 17,6 | 2 | 344 |
| SKYROS | 24,48 | 38,96 | 25 | 27,4 | 20,2 | 7 | 267 |
| ARGOSTOLI | 20,50 | 38,12 | 25,3 | 28,6 | 18,4 | 3 | 366 |
| ARAXOS | 21,42 | 38,15 | 25,6 | 29,8 | 17,8 | 2 | 305 |
| TANAGRA | 23,57 | 38,33 | 25,8 | 30,4 | 17,6 | 38 | 330 |
| HIOS | 26,13 | 38,35 | 25,5 | 28,7 | 19,3 | 9999 | 329 |
| PYRGOS | 21,42 | 37,67 | | | | | |
| TRIPOLI | 22,40 | 37,52 | 22,7 | 29,3 | 12,4 | 80 | 302 |
| TATOI | 23,78 | 38,10 | 25,5 | 29,9 | 17,1 | 29 | |
| HELLINIKO | 23,73 | 37,90 | 26,1 | 30,6 | 20,7 | 45 | 322 |
| ELEYSINA | 23,55 | 38,07 | 27 | 31,5 | 20,1 | 39 | |
| ZAKYNTHOS | 20,88 | 37,75 | 26,1 | 30,4 | 18,6 | 1 | 368 |
| SAMOS | 26,92 | 37,68 | 27,1 | 30,9 | 20,6 | 12 | |
| ARGOS | 22,75 | 37,63 | | | | | |
| KALAMATA | 22,02 | 37,07 | 25,6 | 30,9 | 16,8 | 6 | 332 |
| NAXOS | 25,37 | 37,10 | 24,4 | 27 | 20,6 | 4 | 350 |
| METHONI | 21,70 | 36,82 | | | | | |
| MHLOS | 24,43 | 36,73 | | | | | |
| SPATA | 23,95 | 37,95 | 24,2 | 29,6 | 18,1 | 18 | |
| KOS | 27,08 | 36,80 | 25,1 | 28,7 | 21,2 | 9999 | |
| KYTHIRA | 22,98 | 36,15 | | | | | |
| SANTORINI | 25,41 | 36,41 | 25,9 | 29,6 | 21,5 | 1 | |
| SOUDA | 24,12 | 35,55 | 25,8 | 30,2 | 20,1 | 5 | |
| RODOS | 28,08 | 36,40 | 26 | 28,3 | 22,5 | 9999 | 376 |
| MYKONOS | 25,35 | 37,43 | 25,3 | 28,6 | 21,1 | 6 | |
| HRAKLEIO | 25,18 | 35,33 | 25,1 | 27,6 | 19,9 | 2 | 343 |
| IERAPETRA | 25,73 | 35,02 | | | | | |
| SITEIA | 26,10 | 35,21 | 24,3 | 25,8 | 21,3 | 3 | 304 |
| RETHYMNO | 24,50 | 35,36 | | | | | |
| TYMPAKI | 24,76 | 35,06 | | | | | |
| KASTELI | 25,33 | 35,18 | 24,4 | 28,8 | 17,4 | 8 | 314 |
| KARPATOS | 27,15 | 35,42 | 24,9 | 27,9 | 22,5 | 0 | |
| PAROS | 25,13 | 37,02 | 25,1 | 28 | 21,6 | 2 | 338 |
| SYROS | 24,95 | 37,42 | | | | | |
| IKARIA | 26,35 | 37,68 | | | | | |

**TABLE OF DEVIATIONS
FROM NORMAL VALUES**

| STATION | TMEAN (deviation) (I) | PRECI (deviation %) (II) |
|----------------|-------------------------------|----------------------------------|
| SERRES | 2.2 | 88 |
| FLORINA | | |
| THESSALONIKI | 2.7 | 44 |
| ALEXANDROUPOLI | 1.6 | 147 |
| KOZANI | 2.4 | 157 |
| KERKYRA | 2.6 | 112 |
| IOANNINA | 2.3 | 128 |
| LARISA | 1.8 | 157 |
| LIMNOS | 1.4 | 32 |
| AGHIALOS | 1.3 | 104 |
| MYTILINI | 2.2 | 1 |
| AGRINIO | | |
| SKYROS | | 135 |
| ARGOSTOLI | 2.1 | 14 |
| ARAXOS | 1.6 | 22 |
| HIOS | 1.6 | 1 |
| HELLINIKO | 1.1 | 750 |
| ZAKYNTHOS | 2 | 14 |
| SAMOS | 1.9 | 444 |
| KALAMATA | 1.5 | 92 |
| NAXOS | 1.2 | 143 |
| METHONI | | |
| SANTORINI | 2.5 | 32 |
| SOUDA | 1.4 | 109 |
| RODOS | 1.3 | 1 |
| HERAKLIO | 0.9 | 63 |
| SITIA | | |

(I) deviation of mean temperature from normal values
 (II) deviation of monthly precipitation height from normal values %.

Climatic Bulletin

General Description

Precipitation amounts were higher enough than normals locally over central and northern parts.
The mean temperature varied higher than normal values everywhere.

Climatic Parameters :

- ❖ **Normal Values** : normal values for various parameters (temperature, precipitation, etc) are defined as mean values calculated for 30 years. These normal values are used as basis and represent the mean situation. They can be specified in 10 daily, monthly, seasonally and yearly level and are used for the trend comparison of 10 days, month, season or year as: rainy decameron, mild winter, cool August etc.

Measurement :

- ❖ **Precipitation**
1 mm = 1 litre/m²

Table Legend :

Tmean : Mean Temperature
TN : Minimum Temperature
TX : Maximum Temperature
RR : Precipitation height(mm)
INST : Sun Duration (hours)

UTC hours (Universal Time Coordinates) in Greece :

- ❖ Winter : UTC hour = local hour - 2
- ❖ Summer : UTC hour = local hour - 3

© Hellenic National Meteorological Service
Reproduction is prohibited without written authorization
14 El.Venizelou 16777
Helliniko, Athens
Greece