





Climatic Bulletin

November 2011

 **Max
temperature**

 **Min
temperature**

 **Mean
temperature**

 **Precipitation**

 **Sunshine
duration**



November was a "dry" month for the whole Greek area. Meanwhile snowfalls recorded on the tops of mountains of Eastern parts of the country. The main characteristic was either the long appearance of gale force winds or the frequent appearance of fog over mainland .



Temperature

First Decameron

Minimum: high values even over Northern mainland at the end of the period.

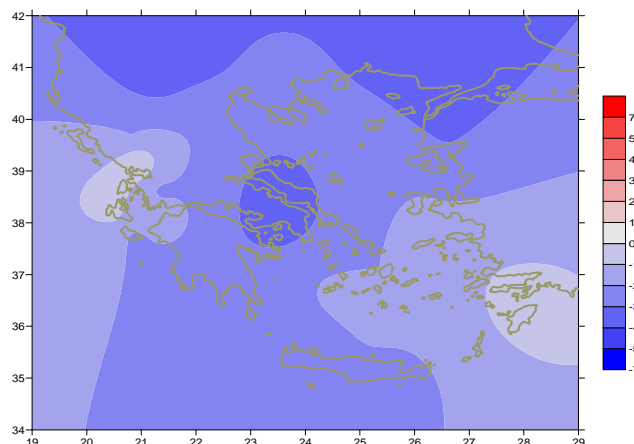
More specific:

9.2°C in Edessa,
 7°C in Alexandroupoli at 8/11.

Maximum: High values at the beginning.

More specific:

23.4°C in Agrinio, 22.3°C in Methoni,
 21.8°C in Rodos at 10/11.



Deviation of mean temperature from normal values

Second Decameron

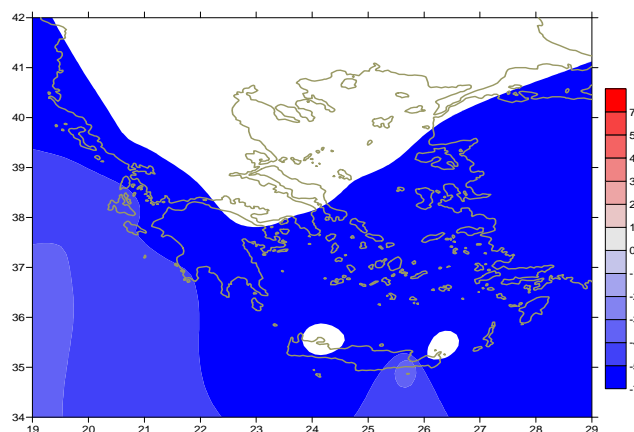
Minimum: high values over Northern and Central mainland in the middle of the period.

E.g (the lowest): -8°C in Florina, -6°C in Kastoria,
 -3°C in Larisa continuously from 16 to 20/11.

Maximum: relatively high at the beginning.

More specific:

23.6°C in Timbaki,
 25°C in Kalamata, 2°C in Karpathos at 11/11.



Deviation of maximum temperature from normal values

Third Decameron

Minimum: Rapid but temporal increase of values in the middle of the period.

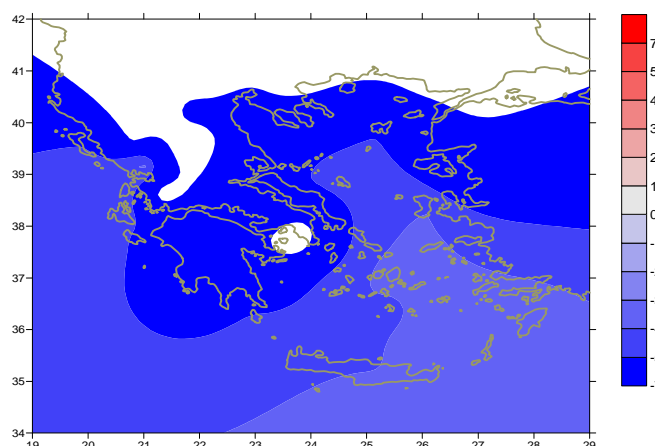
More specific:

-5.6°C in Ioannina (21/11) while $+5.8^{\circ}\text{C}$ (24/11),
 -5.4°C in Tripoli (21/11) while $+5.8^{\circ}\text{C}$ (24/11),
 -2.9°C in Serres (21/11) while $+3.6^{\circ}\text{C}$ (24/11),

Maximum: temporarily high values at the same date.

For example (from the highest):

20.9°C in Methoni,
 19.2°C in Timbaki,
 18.8°C in Argostoli at 24/11.



Deviation of minimum temperature from normal values



P r e c i p i t a t i o n

First Decameron

Low precipitation amounts over NW parts ,as well.

More specific:

27mm in Kerkyra at 7/11,

7mm in Ioannina at 7/11,

4mm in Konitsa at 8/11.

Second Decameron

Very high precipitation amounts over South Aegean
between 12 and 15/11.

More specific:

47mm in Astipalea, 38mm in Souda,

30mm in Kos and 43mm in Karpathos at 14/11.

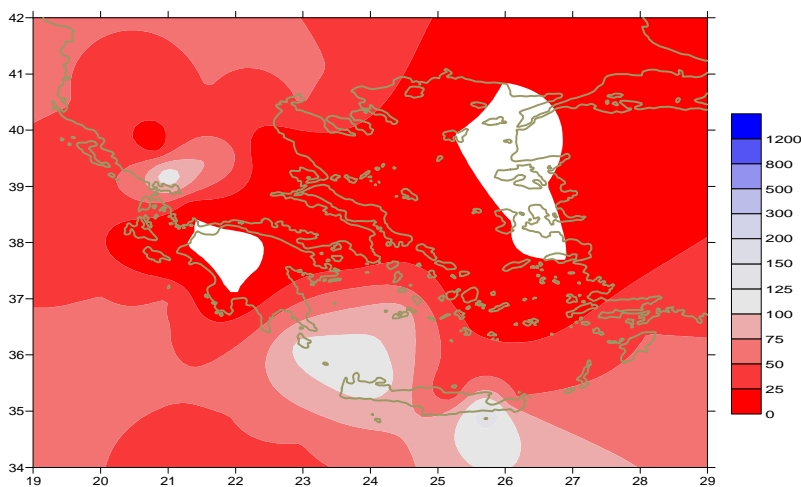
Third Decameron

Not remarkable precipitation amounts at network
(with exception of NW mainland).

More specific:

16mm in Kerkira at 22/11,

15mm in Kozani at 24/11.



*Deviation of monthly perezipitatin
height from normal values (%)*

TABLE OF MEAN VALUES

STATION	Longitude	Latitude	Tmean	TX	TN	RR	INST
SERRES	23,53	41,07	6,4	13,2	0,7	5	60
FLORINA	21,40	40,78	3,3	10,5	-2	16	126
KASTORIA	21,27	40,45	4,6	10,3	-1,3	17	118
TRIKALA_IMATHIAS	22,55	40,60					
THESSALONIKI	22,97	40,52	8,1	12,4	4	9	132
CHRYSOUPOLI	24,62	40,92	7,5	12,9	2,6	0	185
ALEXANDROUPOLI	25,95	40,85	7,4	12,4	2,6	0	173
KOZANI	21,83	40,28	5,5	10,1	1,3	14	
KERKYRA	19,92	39,62	12,5	17,6	8,3	61	152
IOANNINA	20,82	39,70	7,7	13,9	1,2	10	125
PREVEZA	20,76	38,91	13,3	18	10,1	0	
TRIKALA_THESSALIAS	21,77	39,52					
LARISA	22,45	39,65	8,3	13,8	3	2	126
LIMNOS	25,23	39,92	9,7	12,4	7,3	0	165
ARTA	21,00	39,17					
AGHIALOS	22,78	39,21	9,3	13,7	6,4	4	104
MYTILINI	26,60	39,05	11,6	15,4	8,1	0	219
VELO	22,77	37,97					
AGRINIO	21,35	38,60	10,7	18,5	3,7	2	208
LAMIA	22,43	38,87					
ANDRAVIDA	21,28	37,92	11,8	18,2	5,8	0	193
SKYROS	24,48	38,96	12	13,3	10,7	4	98
ARGOSTOLI	20,50	38,12	14,9	18,6	11,6	8	189
ARAXOS	21,42	38,15	13,4	17,6	8,8	0	201
TANAGRA	23,57	38,33	9,2	13,8	6,1	6	120
HIOS	26,13	38,35	12	14,8	9,4	0	191
PYRGOS	21,42	37,67	12,9	19,7	6,8	3	139
TRIPOLI	22,40	37,52	7,3	13,7	1,7	1	169
TATOI	23,78	38,10	9,8	13,7	6,4	17	
HELLINIKO	23,73	37,90	12,1	16,6	7,3	0	143
ELEYSINA	23,55	38,07	11,8	15,3	8,6	0	
ZAKYNTHOS	20,88	37,75	13,6	17,9	10,5	4	187
SAMOS	26,92	37,68	13,2	16,2	10,5	0	
ARGOS	22,75	37,63					
KALAMATA	22,02	37,07	12,2	18,9	7,3	0	186
NAXOS	25,37	37,10	14,2	15,4	12,9	4	123
METHONI	21,70	36,82	13,7	18,7	9,4	10	184
MHLOS	24,43	36,73					
SPATA	23,95	37,95					
KOS	27,08	36,80	13,9	16,2	11,8	38	
KYTHIRA	22,98	36,15					
SANTORINI	25,41	36,41	13,8	15,8	12,2	8	163
SOUDA	24,12	35,55	13,1	15,6	10,8	94	94
RODOS	28,08	36,40	15,8	18,3	13,2	32	195
MYKONOS	25,35	37,43	12,7	14,4	11,6	8	
HERAKLEIO	25,18	35,33	14,5	16,4	12,4	20	112
IERAPETRA	25,73	35,02					
SITEIA	26,10	35,21	14,7	16,1	13,3	30	114
RETHYMNO	24,50	35,36					
TYMPAKI	24,76	35,06	14,2	19	8,9	1	224
KASTELI	25,33	35,18	11,5	14,3	9,3	43	126
KARPATOS	27,15	35,42	15,5	17,8	14,5	48	
PAROS	25,13	37,02					
SYROS	24,95	37,42	13,1	14,9	11,8	2	170
IKARIA	26,35	37,68	13,2	14,5	12,1	1	

Climatic Bulletin

General Description

Precipitation amounts were very lower than normal values over every part of Greece.
Also, the mean temperature varied lower than normal values almost everywhere (with exception of southeastern Aegean area).

Climatic Parameters :

- ❖ **Normal Values** : normal values for various parameters (temperature, precipitation, etc) are defined as mean values calculated for 30 years. These normal values are used as basis and represent the mean situation. They can be specified in 10 daily, monthly, seasonally and yearly level and are used for the trend comparison of 10 days, month, season or year as: rainy decameron, mild winter, cool August etc.

Measurement :

- ❖ **Precipitation**
1 mm = 1 litre/m²

Table Legend :

Tmean : Mean Temperature
TN : Minimum Temperature
TX : Maximum Temperature
RR : Precipitation height(mm)
INST : Sun Duration (hours)

UTC hours (Universal Time Coordinates) in Greece :

- ❖ Winter : UTC hour = local hour - 2
- ❖ Summer : UTC hour = local hour - 3

© Hellenic National Meteorological Service
Reproduction is prohibited without written authorization
14 El.Venizelou 16777
Helliniko, Athens
Greece